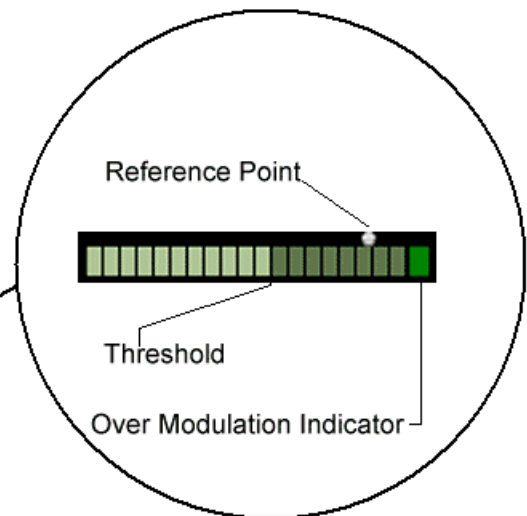


Setting the recording level

Konexx highly recommends you set the recording level prior to attempting to make an important recording. Once the recording level is set, you should not have to constantly reset or adjust the settings, unless you made a change in the selection of the “Record from” device (see above), some other program changed your settings (unusual but possible) or you changed telephone sets.

The Phone 2 PC application GUI provides a visual indication of the recording level. This visual indication is by way of the “Audio Input Indicator”, a bar graph display located in the lower right corner of the main GUI. The Audio Input Indicator will modulate (light up) when audio is detected during the record and playback operations. When inactive, the Audio Input Indicator is divided in two colors. A light green shade and a darker green shade. The start (left side) of the darker green shaded area indicates the “Threshold” setting used by the Voice Activation feature (discussed later in this section). When the Audio Input Indicator is active and audio is detected, the indicator will illuminate (modulate) from left to right. The very far right block of the Audio Input Indicator is an Over Modulation indicator which will light up red if the audio level is too high.


Just above the Audio Input Indicator is a white dot. This white dot is a reference point. Konexx has determined that setting your recording audio to a point where the Audio Input Indicator “peaks” around this dot during the recording process is an optimal setting.




Audio Input Indicator

Whether you are using the external microphone to record room interviews and/or dictation or you are using the telephone to record phone calls; the procedure for setting your recording level is the same. The following will describe setting the recording level when using the telephone.

Start by clicking the Options drop down menu and selecting “Adjust USB Volume all the way up”. This will ensure you have full range of the Rec. Vol. Slider adjustment

Make a call to someone, then start recording by clicking the record icon . While recording observe the Audio Input Indicator, you should see the bars light up (modulate when someone is speaking).

⚡ If you do not see the bars of the Audio Input Indicator lighting up, there is a problem – see troubleshooting section or contact Konexx Support.

Using the Rec. Vol. Slider , adjust the recording level until the bars on the Audio Input Indicator light up to (peak out) the reference point (white dot).

- ✎ The blocks on the Audio Input Indicator will move with the speaker's volume, you want to try and set the recording level to an approximate setting, there will be occasions when the bars will light up beyond the reference point and sometimes below it.



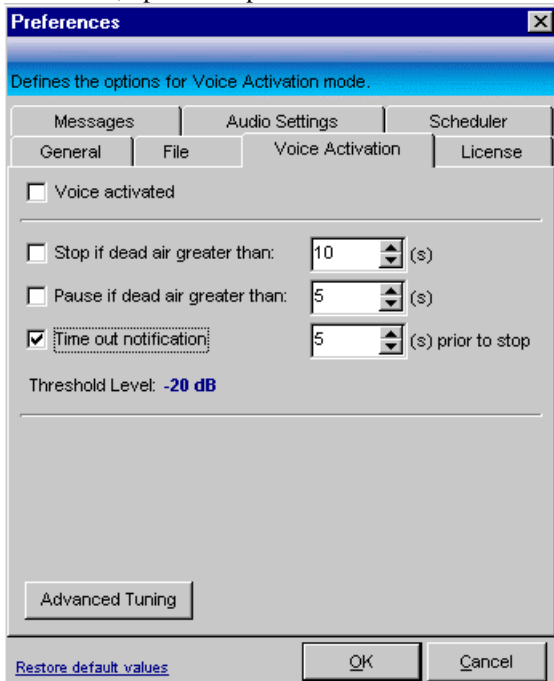
Audio Input Indicator with blocks lit up to the reference point

Setting up and using Voice Activation

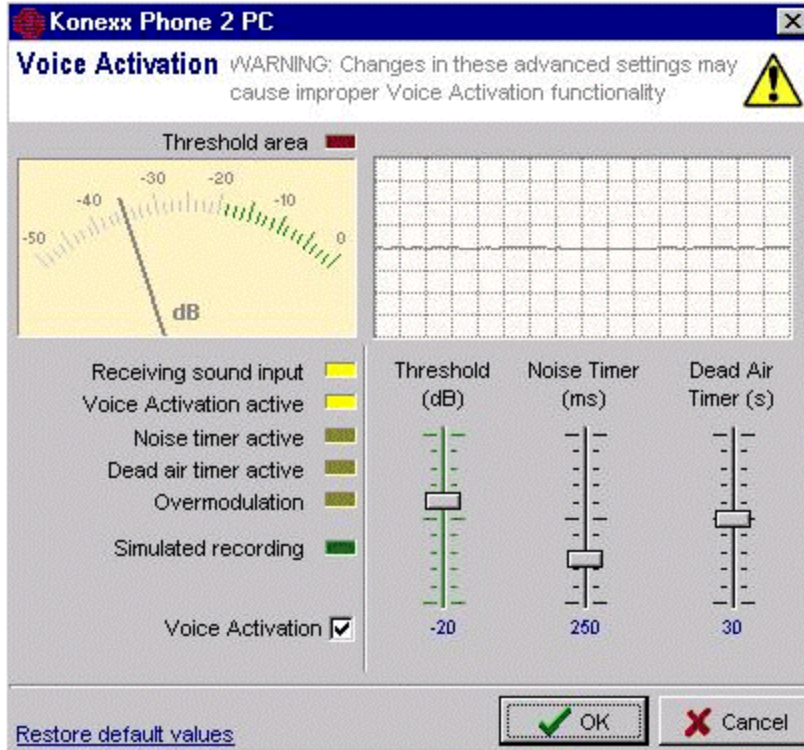
(not available in Basic Edition) Voice Activation is somewhat of a misnomer when used with many recording applications including Phone 2 PC. A better term may be “sound activation”. The Phone 2 PC Voice Activation feature uses sound present at the handset or headset to trigger the start of a recording and a user defined period of silence to determine a call has ended and stop the recording process, then go to a “Ready” state waiting for sound to trigger the start of a new recording.

There are several adjustments available to the user in fine tuning the Voice Activation settings. In most applications, the default settings work well.

The first step is to adjust the recording level as described above (***Setting the recording level***). Once the recording level is set, open the Options – Preferences – Voice Activation window.



Prior to setting the elements in the Options – Preferences – Voice Activation window, click on the “Advanced Tuning” button located in the lower left of the Options – Preferences – Voice Activation window. The following “Advanced Tuning” window will be displayed:



Advanced tuning provides detailed controls for adjusting voice activation parameters.

- ⚡ Note the dB meter in the upper left corner of this window. The dB meter will provide useful information on the audio level received when not on a call and the level received when a call is in progress.

Observe the reading on the dB meter when the telephone is not in use, this reading will provide you with the level of sound detected when no call is in process. Normally, the reading will be -30dB or lower. If you are in a noisy environment and the reading is higher than -30dB , you may have to adjust the “Threshold” to a higher setting than the -20 default setting.

Make a call to someone and observe the dB meter reading. If the recording level was properly set in the first step, the dB meter will read around the -10dB area when the parties in the call are speaking. The green “hash marks” in the dB meter represent the “Threshold” area. The threshold level is the level sound must cross (exceed) in order for the voice activation function to determine a call is in process and start the recording process.

Unless you observed the dB meter reading higher than -30dB when a call was not in process you should not have to make any adjustments to the default settings in this area. If the dB meter read higher than -30 when a call was not in process, you may want to adjust the “Threshold Slider” up a little bit.

The user accessible controls in the Advanced Tuning window are:

Threshold Slider

Sets the threshold level, from -50 dB (very low sound level) to 0 dB (very high sound level). The threshold level is the level sound must cross (exceed) in order for the voice activation function to determine a call is in process and start the recording process.

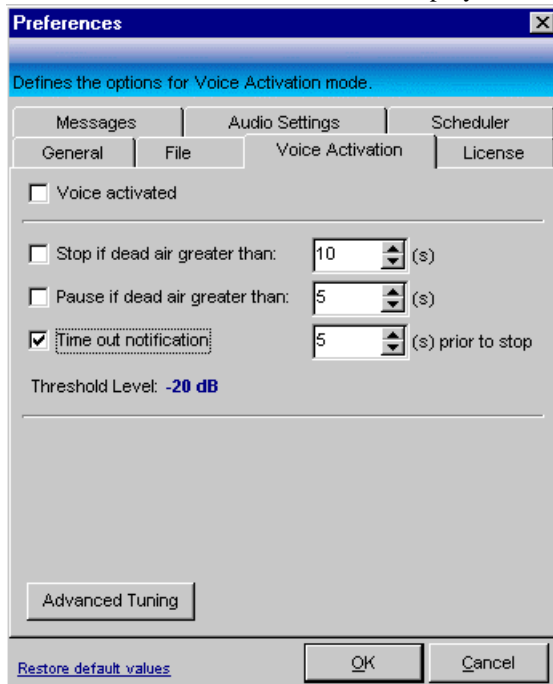
Noise Timer

(*in milliseconds*) Sets the noise window length used by the voice activation engine to identify real sound against bursts of sound. In the figure above, voice activation will only start recording if the sound persists more than 250ms (milliseconds or a quarter of a second) above the threshold level. It goes from 0ms (any burst of sound will trigger the recording) all the way up to 1000ms (1 second).

Dead Air Timer

(in seconds) Sets the silence period length used by the voice activation engine to identify intervals of silence long enough to stop the recording. In the figure above, Phone 2 PC will stop recording after a silence period of 30 seconds.

Close the Advanced Tuning window. When the Advanced Tuning window is closed the Options – Preferences – Voice Activation window should be displayed.



The Phone 2 PC Voice Activation function provides two methods of using voice activated recording.

One method is to have a recording file for each call established on the phone the product is connected to. This is accomplished by selecting (checking the box) “Stop if dead air greater than” element. The **“Stop if dead air greater than”** element directs the Phone 2 PC program to stop recording if it does not detect a signal (sound) for the specified period of time. When the recording is stopped, the application will go to a “Ready” state waiting for sound level greater than the “Threshold level” to trigger the start of a new recording. You may have to adjust the time associated with the “Stop if dead air greater than” element depending on whether your typical call will have longer pauses in the conversation (periods where no sound is made on either end of the call) that last more than the 10 second default setting.

The other method of voice activated recording is to have a single recording with all calls established on the phone until the program is closed or the voice activation is disabled. This is accomplished by selecting (checking the box) “Pause if dead air greater than” element. The **“Pause if dead air greater than”** element directs the Phone 2 PC program to pause the recording if it does not detect a signal (sound) for the specified period of time. When sound level greater than the “Threshold level” is detected the application will resume recording in the same file (a new recording will not be created).

✍ **Both the “Stopif dead air greater than” setting and the “Pause if dead air greater than” setting can not be selected at the same time. Select one or the other.**